



Source Hydration Systems

A New Alternative

A Few of Our Customers

SOURCE Drinking System in Action



U.S. Marines try to kick open a door as troops search Baghdad to arrest looters and try to bring order to the city on Sunday April 13, 2003.

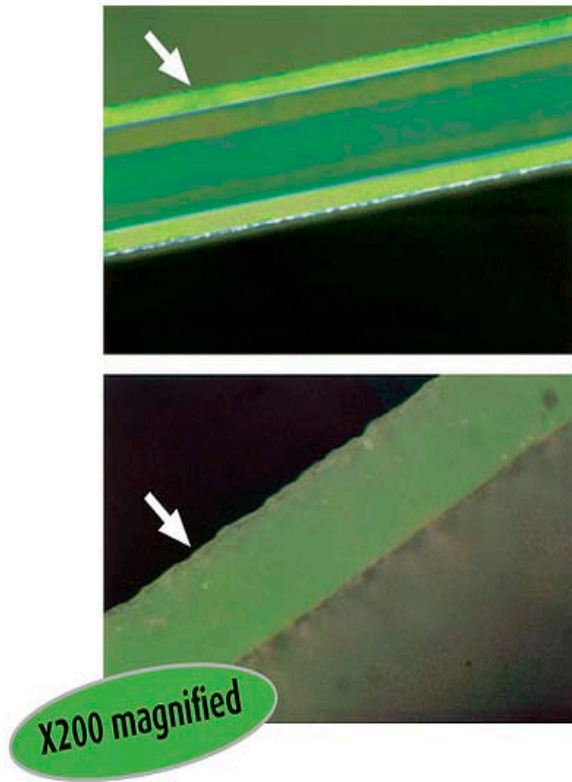
- USMC SYSCOM (standard issue)
- US Army
- FBI
- Border Patrol
- U.S. State Department
- Naval Special Warfare Group
- Israeli Defense Force
- UK MOD
- Cabelas
- Deuter

Something New In Hydration



- Truly innovative- virtually every major component is patented or exclusive to Source:
- - Exclusive Glass-Like™ reservoir and hose
- - Patented Storm Valve
- - Patented Widepac Opening

What Makes Source Different-Glass-Like™ Reservoir and Tube



- Exclusive Glass-Like liner inhibits bacteria growth. (See photo- Source at top, leading competitor below). Drastically reduces cleaning and eliminates “rubber bag” taste.
- FDA approved Anti-Microbial. Unaffected by time or use. Source introduced A-M technology in hydration.
- Reservoir is coextruded from three polyethylene layers of for durability.

What Makes Source Different-Dual Opening



- Patented LEAK-PROOF slide opening- allows 100% access for cleaning, ice insertion, fast draining. Seals airtight.
- Additional front filler port for fast on-the-move refills. Standard sized cap saves weight and is easier to open than oversized filler caps.
- Filler port is sized to fit most pump style water filters- liquids can be filtered directly into the reservoir.



What Makes Source Different-Patented Storm Valve



- Patented design.
- Push/pull/twist mechanism delivers 25% higher flow than the leading bite valve.
- No need to bite. Like drinking from a straw.
- Integrated twist shut-off for storage, travel.
- 90 degree elbow allows shorter, more compact tube.
- Dirt Shield cover prevents dirt contamination.

What Makes Source Different- Quick Disconnect Hose



- Featured on select models.
- Quick disconnect hose seals watertight.
- Allows hose to be left in place while reservoirs are removed and refilled.
- Compatible with the USMC Miox in-line water filter.
- Provides interface for Source accessories.

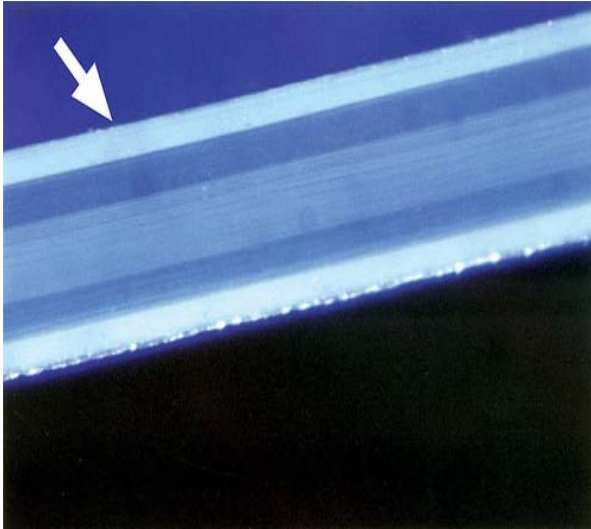
What Makes Source Different-Quick Connect System



- QCA buckle system (see photo) allows instant mounting of carriers onto vests, rucksacks- nearly anything with MOLLE or attachment straps- with no additional hardware required.



What Makes Source Different- CBRN Hydration



- Developed in conjunction with Israeli Army chembio experts.
- 3 layer construction for light weight with increased flexibility.
- Same glass-like reservoir as our standard system for better taste and drastically reduced cleaning.
- Storm valve adapter for training and conventional use.
- Currently in test with the US Army.



What Makes Source Different- ISO Certified Factory

- Only hydration company producing in ISO certified factory.
- Stringent audits and inspections guarantee high quality and hygienic manufacturing in accordance with the food and beverage industry.

Source Saves Money



- Lower cost than competitive systems- more for less.
- Saves cost of purchasing cleaning kits and accessories.
- Saves cost of frequent replacement due to bacteria buildup.

Source Saves Time



- Reduces time/energy spent on cleaning and field maintenance.
- Storm Valve delivers more water, faster, with less energy required to drink.
- Quick connect hose makes fill-ups faster- no unthreading and rethreading of hoses.
- QCA system offers instant attachment to tactical vests and rucksacks with no additional hardware.

Why Choose Source?



- Focussed on product- Source owner IS the product designer.
- Fastest growing hydration supplier in military/law enforcement.
- Customer oriented- fast, flexible and easy to work with.
- Value- Innovative, state of the art products at appealing prices.